

## IMAGES IN CARDIOLOGY

Tahir Naveed<sup>a</sup>, Asif ur Rehman<sup>a</sup>

Thirty four years old married woman has had progressive shortness of breath FC III. She had fixed splitting of second heart sound. Her transthoracic echo showed Atrial Septal defect (ASD) secundum type with left to right shunting. Her TEE was done and ASD was found suitable for device closure as the margins were adequate for device placement. She underwent Amplatzer device closure for ASD.

Below are the oblique four chamber contrast enhanced (A) and plane (B) 64 slice Multi Detector Computerized Tomographic Images of this patient .The images show a metallic Amplatzer device in the inter atrial septum(arrow) closing the ASD adequately.

The AMPLATZER Septal Occluder is a device specifically designed to close an ASD.

The device is implanted during a catheter-based procedure and remains permanently implanted. The device is made from a braided metal (Nitinol) . The device is available in different sizes relative to the defect, ranging from 4mm to 38mm. The required size of the AMPLATZER ASDO is determined by the diameter of the waist, which should be equal to or slightly larger than the measured size of the ASD. When implanted, the connecting waist fills or occludes the defect, and the two opposing retention discs hold the device securely in place.

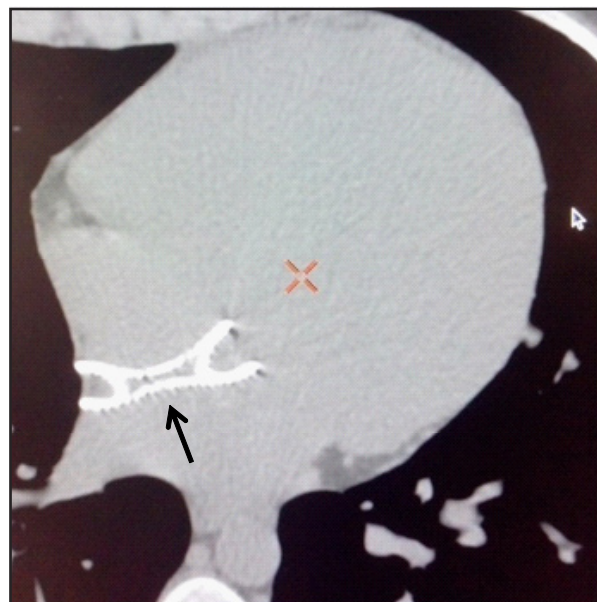
This percutaneous procedure is quite safe and complications reported are rare.

Common complications are embolization,

(J Cardiovasc Dis 2013;11(3):81-81)



A



B

<sup>a</sup> Punjab Institute of Cardiology,  
Lahore-Pakistan

\* Corresponding author:  
Email: tahirnavid@gmail.com

erosion, arrhythmia, device fracture and malfunction, malposition, and thrombus formation on the device .The patient is given antiplatelet for six months and follow up is done with TTE.