

# PERIPHERAL PULMONARY ARTERY STENOSIS MASQUERADING AS PULMONARY HYPERTENSION: A DIAGNOSTIC AND THERAPEUTIC CHALLENGE

Tahir Naveed<sup>a\*</sup>

**A** fourteen years old girl weak and emaciated presented with gradually progressive shortness of breath functional class II-III and

palpitations. On examination her pulse was 90/min blood pressure was 100/70 mmHg. She was  
(*J Cardiovasc Dis* 2015;13(2):62-63)

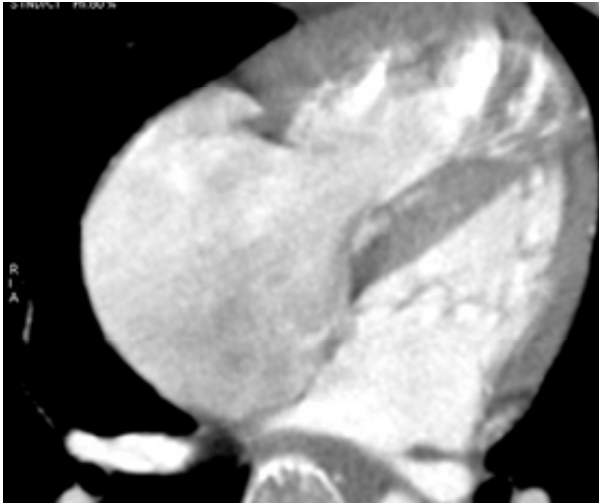


Fig A shows contrast enhanced four chamber view with intact Inter Atrial Septum (IAS).

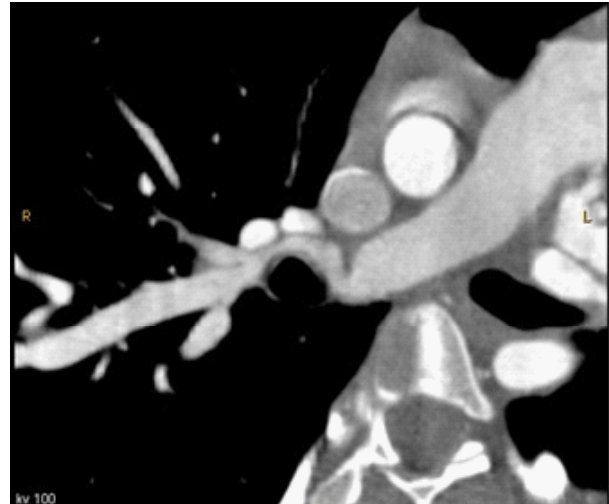


Figure B shows an curved multi planer reformatted image of Right Pulmonary artery (RPA with peripheral RPA stenosis

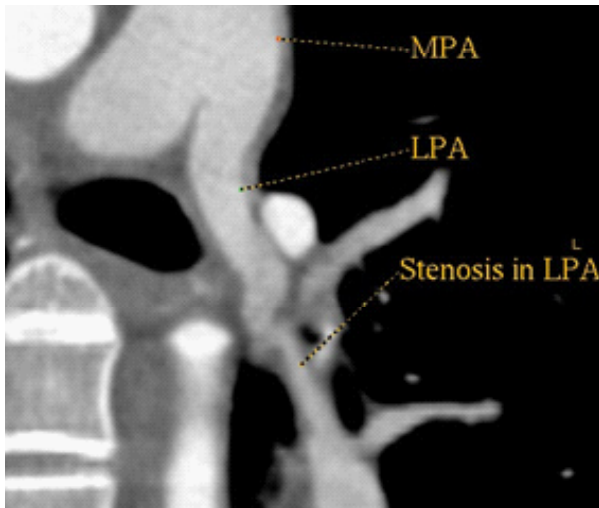


Figure C shows curved Multi Planner reformatted image of Left Pulmonary artery with stenosis.

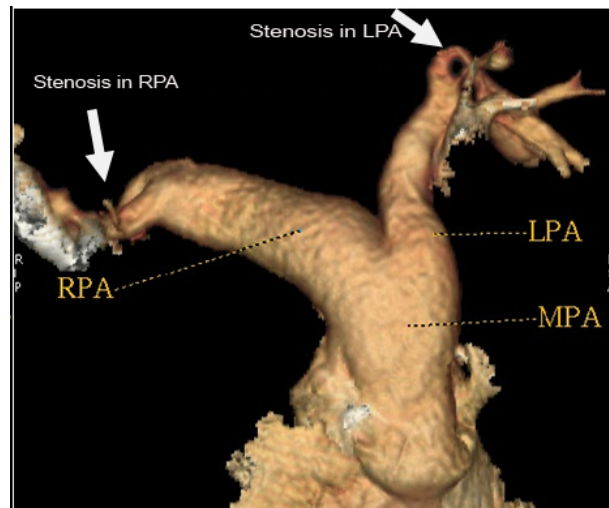


Figure D Volume rendered image of Main ,Right and left pulmonary arteries with stenosis in RPA and LPA.

<sup>a</sup>Punjab Institute of Cardiology,  
Lahore Pakistan.

\* Corresponding author:  
Email: tahirnavid@gmail.com

pale with no other findings on general physical examination . Cardiovascular examination showed normal intensity of first heart sound and increased intensity of second heart sound. A systolic murmur



was heard in precordium and at the back of chest. She was wrongly diagnosed as case Atrial Septal defect (ASD) leading to pulmonary hypertension.

Her 64 Slice Multi Detector Computerized Tomography (MDCT) was done to look for the cause of pulmonary hypertension and she was found to have bilateral peripheral pulmonary artery

stenosis (PPAS).

Peripheral pulmonary artery stenosis (PPAS) is an underrecognized condition in the adult population. PPAS can lead to pulmonary hypertension but is likely misdiagnosed as either idiopathic pulmonary arterial hypertension or chronic thromboembolic pulmonary hypertension.<sup>1</sup>

## REFERENCES

1. Tonelli AR, Ahmed M, Hamed F, Prieto LR. Peripheral pulmonary artery stenosis as a cause of pulmonary hypertension in adults. *Pulmonary Circulation*. 2015;5(1):204-210.